

Trickle Vent Range

Slot and Glazed-In ventilators for timber, PVCu or aluminium



Titon Trickle Vent Range

Titon has expanded its comprehensive range of window trickle ventilators to include new improved designs which assist in compliance with new Ventilation Regulations in England & Wales. Aluminium or PVCu models are now available which offer increased ventilation that no other ventilator manufacturer can match.



This makes both the specifier and the window fabricators' jobs easier. The specifier can pick Titon products to ensure compliance for a choice of ventilation systems in different dwelling types, without constant specification change. The fabricator is safe in the knowledge that only the minimum number of ventilators required need to be used to achieve this compliance.

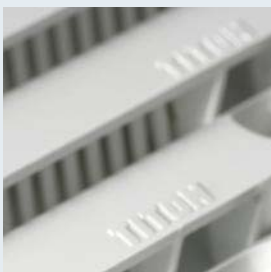


Typical
Trimvent Select
Xtra pack

Need products to work with different ventilation systems?

What's more, specification is simple: Titon has marked the EA on each product for easy reference and all vent and canopy or grille combinations have been tested in accordance with BS EN 13141:2004. The wide choice outlined in this leaflet means compliance is possible when used with other products from Titon's mechanical ventilation range:

- Extract fans
- Continuous mechanical ventilation systems
- Continuous mechanical supply and extract with heat recovery



System 1 - Background (trickle) ventilators and intermittent extract fans

Slot Ventilators **Trimvent® Select Xtra range**

Thanks to Titon's engineering expertise, the Trimvent® Select Xtra gives optimum airflow (and therefore Equivalent Area) utilising existing slot sizes. Specifically developed for Part F of the Building Regulations, Ventilation (England & Wales), and to improve performance for requirements throughout the UK and Europe.

Select Xtra is available in sizes suitable for both new build or replacement situations.

- No need to alter overall window designs to accommodate more vents or find additional vent locations. Select Xtra will do the job
- Improved opening gives optimum Equivalent Area
- Slot sizes as standard but products approximately 60% more efficient for air flow

- Based on extremely successful Trimvent® Select principle

Please go to Titon's own information website, www.partf.co.uk for more information on the revised Part F of the Building Regulations, Ventilation (England & Wales).



Trimvent Select XS13

XS13 Ventilator & XC13 Canopy

For use on PVCu or timber windows. Clip fix version available.

- Equivalent Area (mm²): 4400, 5000 (clip fix 4000)
- Free Area (mm²): 4106 (XS) and 4804 (XC), 5080 (XS) and 6055 (XC).
Area reduces for clip fix options
- Product Length: 411, 497
- Overall Slot Size: 367, 450 x 13

See Product Fixing Instructions for full details



Trimvent Select XS16

XS16 Ventilator & XC16 Canopy

For use on PVCu or timber windows

- Equivalent Area (mm²): 4600
- Free Area (mm²): 4507 (XS) and 4990 (XC)
- Product Length: 366
- Overall Slot Size: 312 x 16

See Product Fixing Instructions for full details



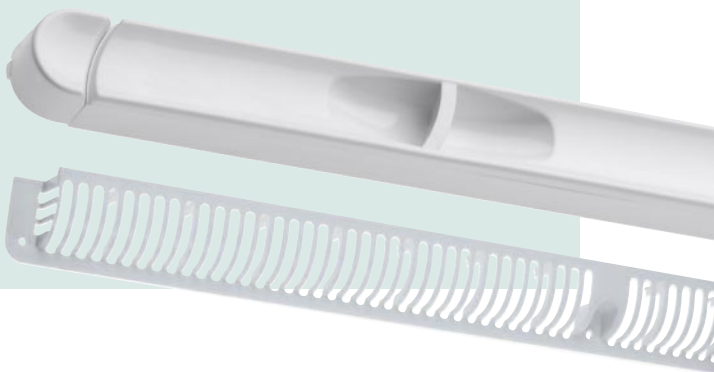
Trimvent Select XR16

XR16 Ventilator & XHD16 Grille (or XC16 Canopy)

For use on timber windows

- Equivalent Area (mm²): 4600
- Free Area (mm²): 4523 (XR) and 4608 (XHD)
- Product Length: 351
- Overall Slot Size: 352 x 16 (with 22 recess)

See Product Fixing Instructions for full details



Trimvent® Select range

- Based on Trimvent® principle

Trimvent Select S13

S13 Ventilator & C13 Canopy

For use on PVCu or timber windows. Clip fix version available.

- Equivalent Area (mm²): 1700, 2700
- Free Area (mm²): 2000, 4000
- Product Length: 267, 412
- Overall Slot Size: 223, 367 x 13

See Product Fixing Instructions for full details



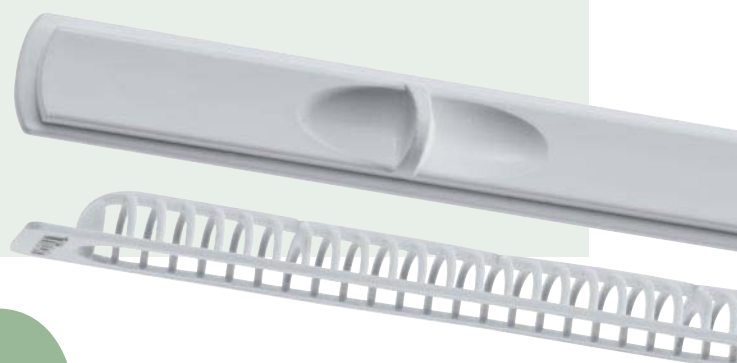
Trimvent Select E18

E18 Ventilator & GS18 Grille

For use on PVCu overhead window sections

- Equivalent Area (mm²): 4200
- Free Area (mm²): 4000
- Product Length: 372 (E18) and 424 (GS18)
- Overall Slot Size: 366 (E18) and 408 (GS18) x 18

See Product Fixing Instructions for full details



Trimvent 4000 Hi Lift

TV4000 Hi Lift Ventilator & HF Canopy

For use on PVCu, aluminium or timber windows

- Equivalent Area (mm²): 2000 (approx), 4000, 6000 (approx)
- Free Area (mm²): all approximate 2000, 4000, 6000
- Vent Length: 255, 400, 575
- Overall Slot Size: 223, 367, 543 x 13

See Product Fixing Instructions for full details



Trimvent 90 Hi Lift

TV90 Hi Lift Ventilator & HF Canopy

For use on PVCu, aluminium or timber windows

- Equivalent Area (mm²): 2200, 4300, 6000 (approx), 8000 (approx)
- Free Area (mm²): all approximate 2000, 4000, 6000, 8000
- Vent Length: 250, 425, 695, 835
- Overall Slot Size: 212, 387, 657, 797 x 16

See Product Fixing Instructions for full details



Trimvent Patio

TV Patio & Patio Grille

For use on PVCu, aluminium or timber windows

- Equivalent Area (mm²): 8000
- Free Area (mm²): 10477 (Vent), 11297 (Grille)
- Product Length: 695
- Overall Slot Size: 657 x 24/29

See Product Fixing Instructions for full details



SF

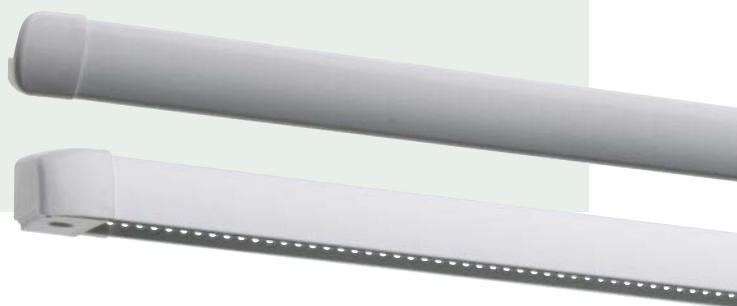
SF Ventilator & SF Canopy

For use on aluminium or PVCu windows.

Also available in bar length

- Equivalent Area (mm²): 2600, 3300, 5000, 6200
- Free Area (mm²): 3000, 4000, 6500, 8000
- Product Length: 325, 425, 650, 775
- Overall Slot Size: 255, 367, 564.5, 717 x 13

See Product Fixing Instructions for full details



Trimvent SM

TVSM Ventilator & SM Canopy

For use on aluminium or PVCu windows.

Also available in bar length

- Equivalent Area (mm²): 1500, 2900, 3500, 4000, 5000
- Free Area (mm²): 2000, 4000, 6000, 6750
- Product Length: 314, 457, 544, 635, 700
- Overall Slot Size: (Length; see Product Fixing Instructions) x 10 or 12

See Product Fixing Instructions for full details

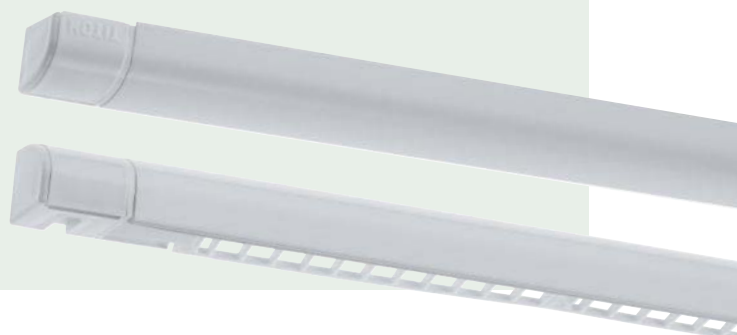


Gas Regs

For use on PVCu, aluminium or timber windows

- Equivalent Area (mm²): Not applicable
- Free Area (mm²): 4000, 5000, 7500
- Product Length: 389, 475, 675
- Overall Slot Size: (Length; see Product Fixing Instructions) x 13 or 16

See Product Fixing Instructions for full details



Glazed-In Ventilators

Maxiglaze

- Equivalent Area (mm²): 12000 per metre
- Free Area (mm²): 21476 per metre of extrusion
- Product Length: 207 - 1527
- Versions/Options: Cord operation or Rod operation. Gas Regulations. Mill finish

See Product Fixing Instructions for full details



Variglaze

- Equivalent Area (mm²): 5400 per metre
- Free Area (mm²): 9650 per metre of extrusion
- Product Length: 178 - 1500
- Versions/Options: Cord operation. Gas Regulations

See Product Fixing Instructions for full details



See also 'Commercial Glazed-In Ventilators' leaflet

- All dimensions in millimetres unless otherwise stated.
- Please phone for available colours/finishes
- EA figures achieved when fitted to manufacturers recommendations. Tested in accordance with BS EN 13141-1:2004
- The majority of products in the Titon slot ventilator range are available with Remote Control option.

**Call us on 01206 713800 or visit
www.partf.co.uk or www.titon.co.uk**



MARKETING DIVISION

International House, Peartree Road, Stanway, Colchester, Essex CO3 0JL. UK.

Tel: +44 (0)1206 713800 **Fax:** +44 (0)1206 543126 **Email:** enquiries@titon.co.uk **Web:** www.titon.com